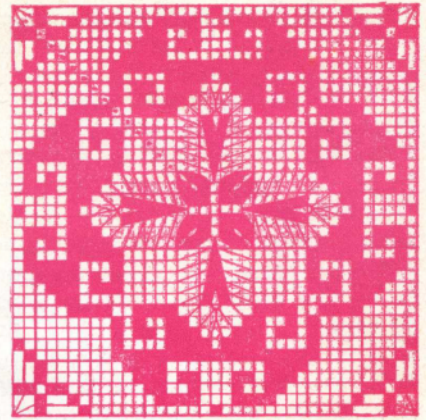


for the BEDROOM



Crocheted Medallion for Bedspread "Greek-Key" Design

MATERIALS—Lily SKYTONE Mercerized Crochet Cotton, No. 1, in White, Cream or Ecreu. Crochet Hook Size 7 or 8. 1 Medallion—125 yds. Size—8¼".

Terms:—Blocks—bl. Space—sp.

Ch 12, sl st in starting st. Ch 3, 2 dc in same st, (ch 2, 5 dc in next 3d st) 3 times, ch 2, 2 dc in 1st corner, sl st in 1st 3-ch.

ROW 2—Ch 3, turn, dc in sl st, dc in next 2 dc, * ch 2, dc in next 2 dc, (2 dc, ch 5 and 2 dc) in next dc, dc in next 2 dc. Repeat from * twice. Ch 2, dc in next 2 dc, 2 dc in next st, ch 2, dc in 1st 3-ch.

ROW 3—Ch 3, turn, 2 dc in 2-ch, * 2 dc in next dc, hdc in next, sc in next, sl st in next, sl st in 2-ch, sl st in next dc, sc in next, hdc in next, 2 dc in next, ** (3 dc, ch 5 and 3 dc) in 5-ch. Repeat from * twice and from * to **. 3 dc in corner, ch 2, dc in 1st 3-ch.

ROW 4—Ch 3 for a dc, turn, * ch 10, 2 dc in 2 ch space on center of side, ch 10, (dc, ch 5, dc) in 3d st of corner 5-ch. Repeat from * around. In last corner, make dc, ch 2, dc in 3d st of 1st chain.

ROW 5—Ch 5, turn, dc in next dc, * ch 9, 2 dc in each of next 2 dc, ch 9, dc in next dc, ch 2, (dc, ch 5, dc) in corner st, ch 2, dc in next dc. Repeat from * around. Ch 2, dc in 1st 3-ch. End all rows in this way.

ROW 6—Ch, turn, dc in next dc, ch 2 dc in next, ch 9, dc in next 2 dc, 2 dc in next, dc in next, ch 9, dc in next dc. Work corner, following pattern. Continue around.

ROW 7—Like other rows. In sides, ch 8, dc in next 2 dc, 2 dc in next, dc in 2 dc, ch 8, dc in next dc.

ROW 8—Like others. On sides, ch 8, dc in next 3 dc, ch 1, dc in next 3 dc, ch 8, dc in next dc.

ROW 9—Ch 5, turn, dc in next dc, * (2 dc in 2-ch, dc in dc) 4 times, (4 bls. made), ch 8, dc in next 3 dc, ch 3, dc in next 3 dc, ch 8, dc in next dc, 4 bls, 3 sps around corner. Repeat from * around.

ROW 10—Ch 3, turn, 1 bl, * 1 sp, 1 bl, 2 sps, 1 bl, 3 dc in next loop, ch 9, sc in center 3-ch sp, ch 9, 3 dc in next

loop dc in next dc, 1 bl, 2 sps, 1 bl, 1 sp, (3 dc, ch 5 and 3 dc) in corner sp, dc in dc. Repeat from * around.

ROW 11—Ch 5, turn, dc in next, * 1 bl, (1 sp, 2 bls) twice, 3 sc in next loop, ch 6, dc in next sc, ch 6, 3 dc in next loop, (2 bls, 1 sp) twice, 1 bl, 3 sps around corner. Repeat from * around.

ROW 12—Ch 5, turn, dc in next dc, 1 sp, * 1 bl, 4 sps, 3 bls, 3 dc in next loop, ch 2, 3 dc in next loop, dc in dc, 3 bls, 4 sps, 1 bl, 5 sps around corner. Repeat from * around.

ROW 13—Ch 5, turn, dc in next dc and follow pattern. Repeat twice.

ROW 16—Ch 3, turn, 2 bls, and follow pattern.

ROW 17—Ch 3, turn, 1 bl, * ch 5, skip 5 dc, dc in next dc, 1 bl, 7 sps, 4 bls, 3 sps, 4 bls, 7 sps, 1 bl, ch 5, skip 5 dc, dc in next dc, (3 dc, ch 9 and 3 dc) in corner sp, dc in next dc. Repeat from * around. End with ch 4, tr in 1st 3-ch.

ROW 18—Turn, * ch 5, 1 bl in next bl, ch 8, dc in next 4th dc, (1 bl, 11 sps) twice, 1 bl, ch 8, skip next 5-ch, 1 bl over next bl, ch 5, sc in next 9-ch. Repeat from * around. Fasten off.

Stretch and pin block right-side-down in a true square and steam and press thru a cloth.

Sew blocks together, exactly matching rows.



